



RELATIVITY

SCHOOL

RELATIVITY SCHOOL IS AN ACCREDITED BRANCH CAMPUS OF HUSSIAN COLLEGE.

International Student Guide 2015-2016



Join us in LA.



We are committed to cultural vibrancy and realize that extraordinary outcomes are possible when our students, faculty and staff engage diverse cultures around the world with curiosity, courage and respect. Our campus is located in the heart of Los Angeles—the cultural hub of the Pacific Rim and one of only two U.S. cities without a majority population. People from 140 countries, speaking approximately 86 different languages, currently call Los Angeles home. Relativity School not only supports global consciousness, we champion it from Day One through collaborative projects, innovative technologies and digital platforms.

ADVANTAGES OF A U.S. EDUCATION

Over 700,000 international students from more than 200 countries around the world come to the United States to pursue higher education each year. The educational experience here is among the best in the world and you will find that it adds considerable value to your professional development—as well as enhances your career, success and leadership in your country. Studying here will broaden your horizons and expose you to a variety of perspectives, the latest technology, state-of-the-art research and world-class training.

We consider the admissions process—and your application—our first opportunity to inspire you and be inspired. Choosing your college and degree program is a huge commitment in time and resources and we believe the process should be rewarding, not stressful.

The best way to ensure success when applying to one of our programs is to reach out to your personal Admissions Counselor as much as possible. They will help you every step of the way. The other thing you must do is to focus on a single “action step” at a time. Life is a series of action steps. And so is your completed college application to Relativity School.

Each Applicant is considered for any and all scholarships that may apply (Merit, Need-Based, Innovation, etc.) as a part of the normal admissions process in applying to Relativity School. All applicants to Relativity School submit a required online application and are evaluated holistically, with consideration for academic success, attendance, community service, extra curricular activities, creative freedom, entrepreneurial spirit and artistic ability. Artistic achievement is evaluated through creative assessment, application essays, audition or portfolio review and the interview process.

APPLICATION CHECKLIST

The following are the components of your application to Relativity School and are listed with more detail in our APPLICATION GUIDE.

- » Completed Online Application via SLIDEROOM including
 - » Video Introduction
 - » Personal Statement
 - » Short Creative Essay #1
 - » Short Creative Essay #2
- » Audition, Portfolio or Creative Submission (varies by program)
- » Official High School Transcript (if applicable)
- » 2 Letters of Recommendation
- » Interview (In person, via Skype, by phone)
- » Official SAT/ACT Score Report (recommended but not required)

RELATIVITY SCHOOL PROGRAMS

BFA Film + Digital Content

Directing
Producing
Screenwriting
Documentary
Visual Effects
Editing
Cinematography
Sound Design

BFA Acting [Film + Television]

BFA Contemporary Musical Theatre + Film

BFA Commercial Dance

BA Entrepreneurship

Entertainment Media
Music Business
Sports Media + Marketing
Casting + Talent Management

BFA Art

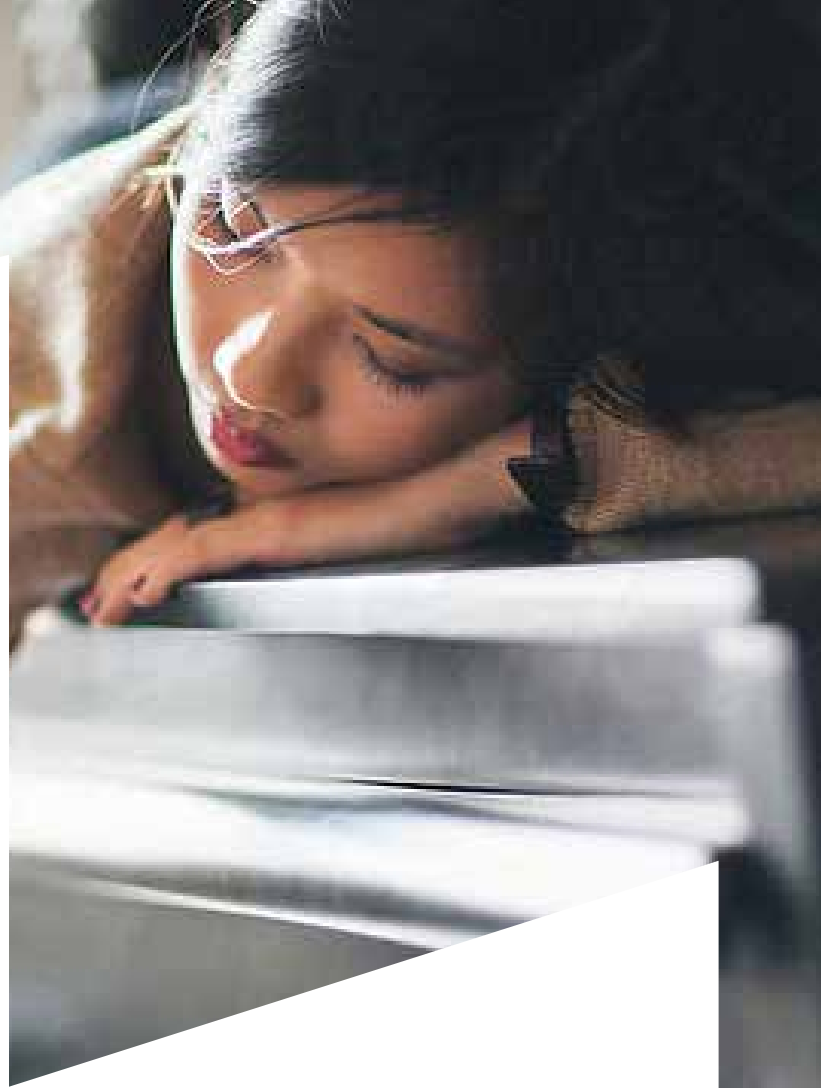
Production Design
Digital Media
Graphic Design
Visual Communications

Post-Baccalaureate Programs

Film + Digital Content
Acting

- » Relativity School SAT Code: 7663
- » Relativity School ACT Code: 7064
- » Resume & Photo (optional)
- » TOEFL/IELTS Official Score (International students only)
- » Relativity School TOEFL Code: 7616
- » Application Fee \$75

All applicants, regardless of citizenship, must apply online. Students outside the U.S. who must send application documents (e.g. diplomas, transcripts, etc.) in hardcopy form are strongly encouraged to do so immediately when starting the online form to allow for delivery.



In addition to the Relativity School’s General Admissions Requirements, the following additional requirements are for students applying from outside the United States.

All transcripts must be submitted in English. If your transcripts are not in English, they must be translated by an educational credentialing service and evaluated to ensure U.S. High School equivalency.

English Proficiency: Relativity School requires all applicants whose native language is not English to adequately demonstrate English competency as a part of the application process. Students may demonstrate competency by taking either the TOEFL exam (administered by the Educational Testing Service) or the IELTS exam (administered by the International English Language Testing System). The minimum test scores required for admission are as follows:

TOEFL: 550 for the standard test and 79 for the Internet-based exam. The Relativity School Institution Code is 7616.

IELTS: Overall band score of 6.5 or higher (Institution Code not required). To order official IELTS scores please contact the test center directly where you took

the IELTS test and request that your official test results be sent directly to Relativity School. We do not accept unofficial test results, faxed test results or results submitted with your application for admission.

Test results should be sent to:

Relativity School
 Admissions Office
 1201 W. 5th Street, F-10
 Los Angeles, CA 90017

TEST	MINIMUM SCORE	TO REGISTER
iTEP	3.7	itepexam.com
TOEFL Internet	79	ets.org
TOEFL Paper	550	ets.org
IELTS	6.0	ielts.org
TOEIC	710	ets.org/toeic

STUDENT VISAS

To study at Relativity School as a non-resident, students must first obtain an F-1 student visa. The F-1 student visa allows you to lawfully enter the U.S. and is not a tourist visa. In fact, it is different from all other visa types. You will not apply for your F-1 student visa until first being accepted into one of our programs and after we send you an authorized Immigration Form I-20. Students can apply within 120 days and can travel within 30 days from the start date of their I-20.

Once you are accepted by Relativity School you must complete the following:

- 1. Complete the I-20 Request Form.** This form will be emailed to you by the Dean of Student Services once you have completed the admissions process and have been accepted by Relativity School.
- 2. Students must submit bank statements reflecting financial support to the Relativity School's Office.** The statement must show that you are fully supported and able to pay school fees and living expenses for a complete academic year by funds from outside the U.S. Cost of Attendance at Relativity School and living in Los Angeles is estimated at \$57,600 USD (less any Relativity School Scholarships and Grants).
3. You must pay in advance your first semester tuition in full and sign your Relativity School Enrollment Agreement. Payment accepted via Bank Wire Transfer.

Once all these steps are complete, your I-20 Certification of Eligibility will be created and sent to your home via FedEx delivery. Once you have received your I-20 you may make an appointment with the US Embassy in your country to apply for your Student Visa.

If approved by the US Embassy, you may only travel to the US no earlier than 30 days prior to your start date at Relativity School.

ENGLISH AS A 2ND LANGUAGE

Relativity School plans to be at the forefront of bringing ESL speakers to Hollywood and teaching the skills necessary to reach a broader global audience. Cultural diversity is important to us—we welcome students that speak English as their second language. Relativity School does not currently offer on-campus English as a Second Language (ESL).



HEALTH INSURANCE

All students attending Relativity School must have a comprehensive health insurance plan that meets healthcare reform standards while attending. Students must provide proof of insurance for enrollment and to begin classes.

TUITION INSURANCE

Tuition refund insurance, also referred to as tuition insurance, provides coverage in case a child is forced to withdraw from college for medical or other reasons. Travel + Tuition Insurance is not required. There is no “right” amount of tuition insurance. It varies person to person, family to family. Be sure to assess your out-of-pocket risk before choosing your coverage levels. Consider all of the costs associated with attending college that you and your family would lose if you had to withdraw for medical reasons. This includes fees, room, board, tuition and books.

GRANTS + SCHOLARSHIPS

All prospective students, including international students, are eligible for all Relativity School grants and scholarships. See the website or the **SCHOLARSHIP GUIDE** section for more information.

ADDITIONAL RESOURCES FOR INTERNATIONAL STUDENTS

If you haven’t already discovered it in your research, you should visit the eduPASS! website. It contains up-to-date information about everything an international student needs to know about studying and living in the United States. It covers every topic, from college admissions and financial aid to culture shock and clothing sizes. EDUCATIONUSA and INTEREXCHANGE also have great information about studying in the USA , visas, financial aid cultural exchange.

INTERNATIONAL STUDENT ORIENTATION

All international students have special breakout sessions as part of The Relativity First Year Experience course that is required for all students during your first semester. This orientation program consists of three full days of workshops, tours, meet-n-greets, and faculty advisement and information seminars prior to your first day of classes. Our orientation program continues throughout your first semester with additional offerings and events specifically created for our diverse global community.





RELATIVITY
SCHOOL

450 SOUTH BIXEL STREET, SUITE F-10 » LOS ANGELES, CALIFORNIA 90017

PHONE: 800.762.1993 **EMAIL:** INFO@RELATIVITYSCHOOL.ORG **RELATIVITYSCHOOL.ORG**